



Portal > FAQs > Media Streaming and Flow server > Setting up media player as a media server (windows only)

## Setting up media player as a media server (windows only)

Pure Support - UK - 2015-07-29 - in Media Streaming and Flow server

The PC on which you have audio you want to share must be located on the same network as your Pure Internet radio.

Your Flow internet radio must be connected to your local wireless network

The audio media you want to serve must be in a file format your radio can play. To check supported formats click [here](#)

<http://support-uk.pure.com/kb/articles/7-supported-formats-and-bit-rates>

Below are instructions for Windows Media Player 12 and Windows Media Player 11

### Windows Media Player 12

Start Windows Media Player, click "**Stream**" and click on "**Turn on media streaming**"



Then click on "**Turn on media streaming**" (see below)

## Choose media streaming options for computers and devices

**Media streaming is not turned on**

Media streaming allows you to send your music, pictures and videos to other computers and devices on your network. It also allows you to receive media from other computers and devices.

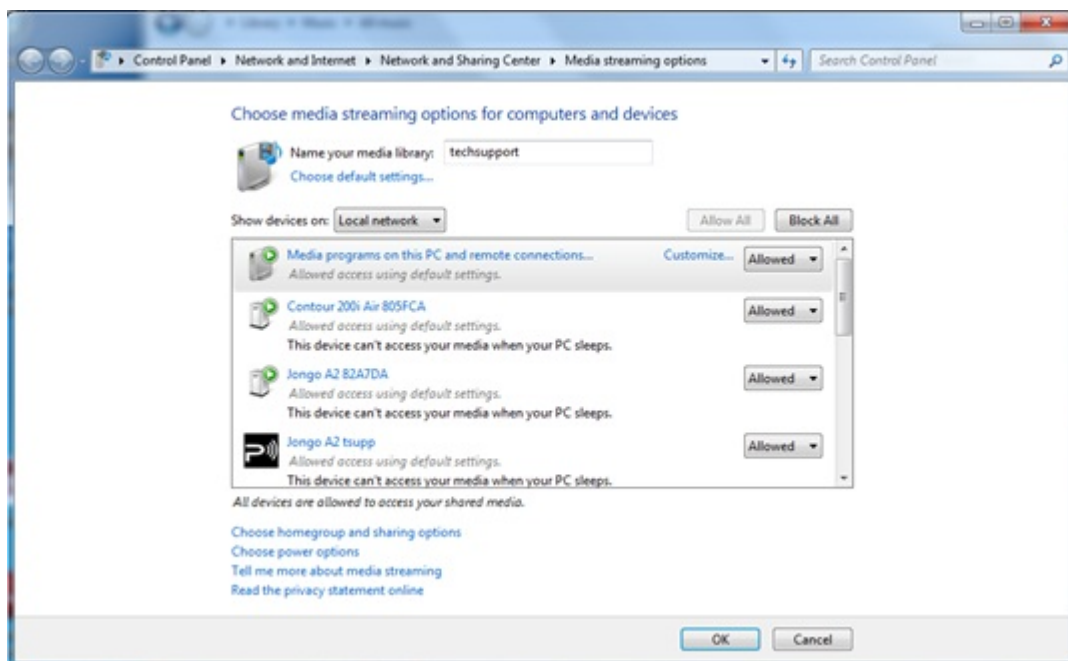
If you turn on media streaming, your current network profile and firewall settings will be modified. You should turn on media streaming only on networks that you trust, such as home or work networks.

[Turn on media streaming](#)

[Tell me more about media streaming](#)  
[Read the privacy statement online](#)

**Please Note:** If this option has already been enabled, you will need click on More Streaming options...

You now need to click “**Allow all**”, however, you can specify individual devices if you wish.



Now click on **Customize** (see image below) alongside each device and on the following screen, select **Make all of the media in my library available to this device** before clicking **OK**.

## Locating and indexing your music

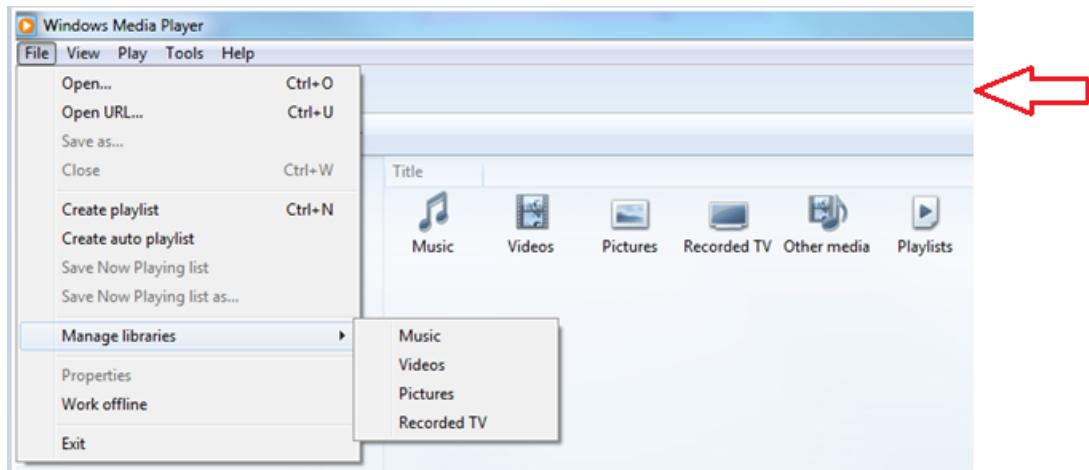
When you set up a media server you need to tell the server the location of the media you want served. Telling the media server the location of your music will allow the server to start a process called **indexing**. Indexing allows a server to scan the entire contents of what is to be served and build its own internal library of the locations of each individual file. This helps the server quickly find the individual files you request when you start using the server.

Windows Media Player server will automatically look for, and index, any music files in the

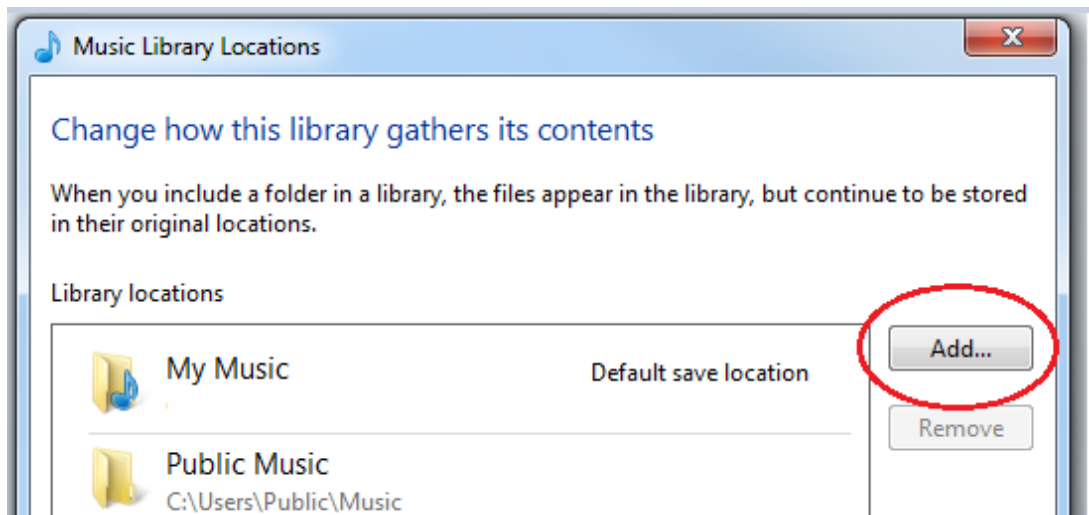
default **My Music** folder found in your **My Documents folder**. If you have your music collection in this folder then you don't need to tell the server where it is and the process of indexing will have already started. However if you have your music stored in a different folder then you will need to tell your server where that music is located so it can index and serve it.

The default setting will be folders located in **My Documents** - which contain all the 'My' folders - including **My Music**. If you want to add other locations you need to click on:

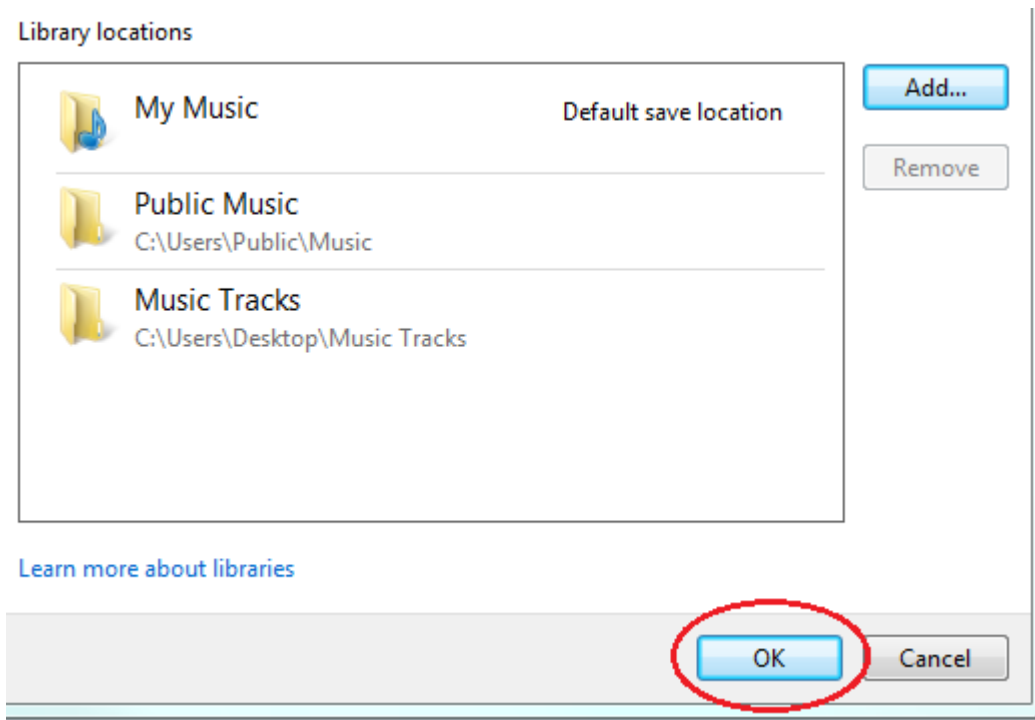
**File > Manage Libraries > Music** to locate the relevant paths to your locations. (as seen in below)



**Please note:** If your Menu bar is not visible in the player, please right click in the area denoted by the arrow and click on **Show menu bar** for these additional options.



This will open a new dialogue window (shown above) and allow you to manage the **Music Library Locations**. You will now need to click on the **Add** button to add other locations of stored music content. Once you have located your chosen folder, left click with your mouse until highlighted, before finally selecting **Include Folder** and then **OK**.



You are now ready to stream your content to your Internet radio.

On your radio select the **Media Player** source and your radio will start automatically scanning for new servers available on the same network. If it doesn't scan or you have already performed a scan, then you can instruct the radio to search for new servers by pressing **Options > Media Player Settings > Media Server > Scan For Servers**.

You should now see the name of your server select this and you will see all your content, you can now select and play.

### **Media server doesn't work?**

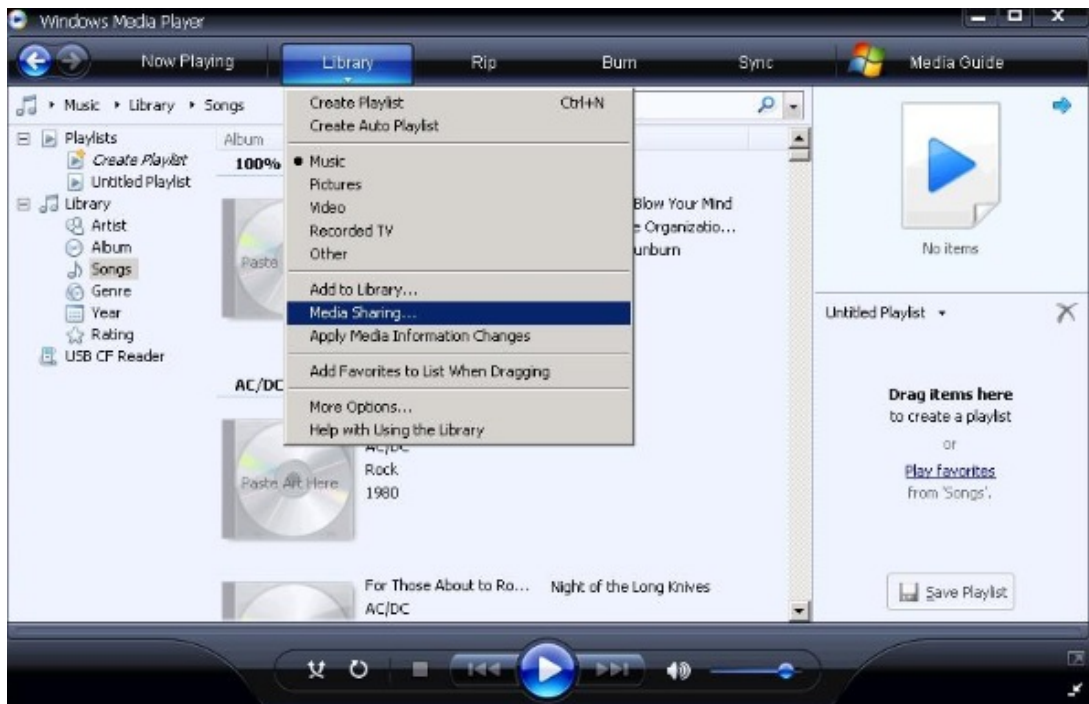
Media serving is pretty basic in principle but there are a number of factors that can prevent the successful set-up of any media server, and that tends to be security software. Do consider that a default install or 'clean' install of a Windows or MAC OS system - before any 3rd party software is introduced - will always result in successful media serving. It tends to be the later addition of 3rd party software that can interfere with this process. If you are having difficulties setting up your media sever then start with our troubleshooting notes found [here](#)

You can find out more about using Windows Media Player 12 as a media server from Microsoft: <http://www.microsoft.com/windows/windowsmedia/player/faq/sharing.msp>

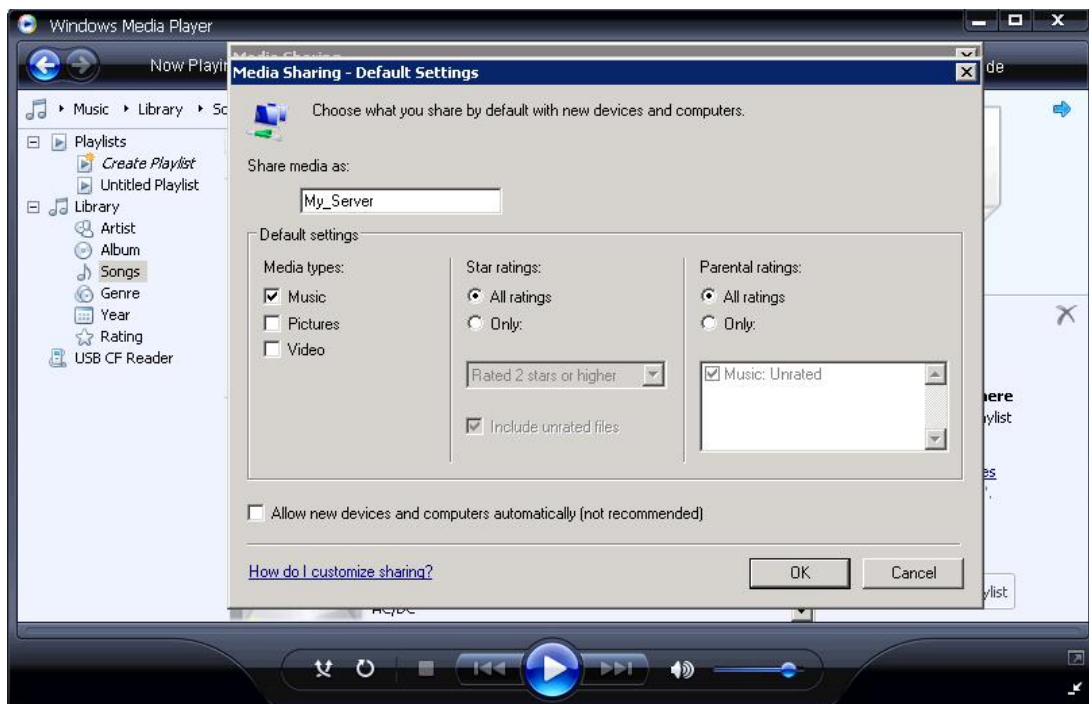
### **Windows Media Player 11**

Setting up any type of server consists of a few fundamental steps. You need server software (in this case we have Windows Media Player), you'll need to give the server a name, you'll need to tell the server what you want to serve, and you'll need to tell the server the location of what you want to serve.

Start Windows Media Player and click the **Library** drop down menu and select **Media Sharing**. Don't worry if your version of Media Player doesn't look exactly the same; the menu structures will be the same.



Click **Share My Media To:** and click the now highlighted **Settings** button. This is where you can name your server and tell the server what type of media you want to serve. For this music media server I have named my server **My\_Server** and I have specified **Music** as the type of media to be served in **My Media Types**, and **All Ratings**.



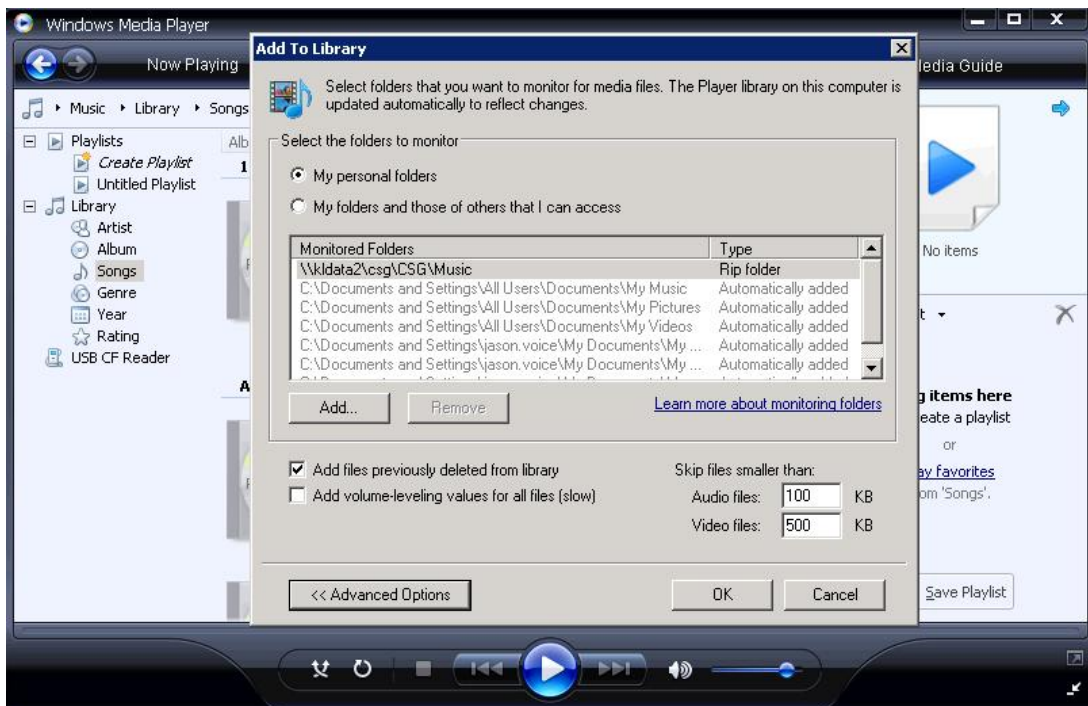
Click Ok and your media server is now set up.

## Locating and indexing your music

When you set up a media server you need to tell the server the location of the media you want served. Telling the media server the location of your music will allow the server to start a process called 'indexing'. Indexing allows a server to scan the entire contents of what is to be served and build its own internal library of the locations of each individual file. This helps the server quickly find the individual files you request when you start using the server.

Windows Media Player server will automatically look for, and index, any music files in the default My Music folder found in your My Documents folder. If you have your music collection in this folder then you don't need to tell the server where it is and the process of indexing will have already started. However if you have your music stored in a different folder then you will need to tell your server where that music is located so it can index and serve it.

Click the **Library** drop down menu and click **Add To Library**. The default setting will be My Personal Folders - which include all the 'My' folders found in 'My Documents' - including 'My Music'. If you want to add other locations you need to click **Advanced Options** and add the relevant paths to your locations.



**Tip!** When setting up a media server you must ensure your media is on the same network and preferably on the local host machine (the same machine that is hosting the server).

Once you have finished, click **OK** and the server can start indexing.

Ok, so you have your media server started, named and you have given it the location of your music you can now see it on your radio and connect to it.

On your radio select the **Media Player** source and your radio will start automatically scanning for new servers available on the same network. If it doesn't scan or you have already performed a scan, then you can instruct the radio to search for new servers by pressing **Options > Media Player Settings > Media Server > Scan For Servers**.

You should now see the name of your server, however selecting your sever for the first time won't give you immediate access as you need to give the server permission for the radio connect.

In Windows Media Player click the **Library** drop down menu and click **Media Sharing**. You will now see a device listed - probably named 'Unknown Device' - that you can 'allow' to connect. Providing there are no other media servers on the same network this unknown device will be your radio. Click the Unknown Device and click **Allow**.



And that's it! You've instructed your server to allow the radio to access it and you can start streaming music.

**Tip!** the process if 'indexing' for the first time can make the media server very slow in reposing to requests. Indexing can also take time - depending on how many files there are to be indexed - so when setting up a server and indexing for the first time you should consider leaving the server to complete its index before you trying to access it. Full indexing only needs to be done once so you won't have to wait around again.

### **Media server doesn't work?**

Media serving is pretty basic in principle but there are a number of factors that can prevent the successful set-up of any media server, and that tends to be security software. Do

consider that a default install or 'clean' install of a Windows or MAC OS system - before any 3rd party software is introduced - will always result in successful media serving. It tends to be the later addition of 3rd party software that can interfere with this process. If you are having difficulties setting up your media sever then start with our troubleshooting notes found [here](#)

You can find out more about using Windows Media Player 11 as a media server from Microsoft: <http://www.microsoft.com/windows/windowsmedia/player/faq/sharing.msp>